



VENOMOUS SNAKES



As wonderful as the great outdoors can be, remember to **REVIEW YOUR HAZARDS** for creatures like snakes!

More information? [Visit the CDC](#)

WHAT TO DO:



Stay Calm

Remove yourself from the area where the snake is to avoid a second bite.



Call 911

- Notify your supervisor and co-workers
- Do not attempt to catch or kill the snake, but if possible, take a picture or identify the snake from a safe distance.



Restrict Movement

Keep the bite area below the heart and restrict movement as much as you can.

- Movement will increase blood flow and the rate at which the venom will move throughout the body.
- Avoid alcohol and caffeinated beverages as that can also increase blood flow.



First Aid

- Wash the bite area with soap and water.
- Cover with a clean and dry bandage.

IDENTIFY IT

Pennsylvania is home to 21 different species of snakes. 3 of those species are venomous: the Copperhead, Timber Rattlesnake, and the Eastern Massasauga Snake. It is important to take proper precautions when around these snakes or areas that are known habitats for them. The first step is to identify them. One trick is to look at the eyes. All venomous snakes in Pennsylvania have vertical pupils, like a cat's eye. Here are some other characteristics to identify these venomous snakes.

Copperhead

- Size: 24-36 inches
- Copper or hazel brown body.
- They typically have reddish-brown cross bands that resemble a stretched out hourglass with small, dark spots in between.



Timber Rattlesnake

- Size: 36-54 inches
- Typically black, although less common, some of them can be a yellowish-brown instead.
- They have black or dark brown cross bands accompanied by yellowish cross bands down the back of the snake
- The easiest way to identify this snake is by the rattle

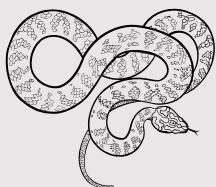


Eastern Massasauga (Endangered)

- Size: 20-30 inches
- Brownish gray body
 - Has rows of dark brown blotches that runs down its back and sides
- Is also a type of Rattlesnake so keep an eye and ears out for the rattle!



Focus on PREVENTION



1. **Never handle or touch a snake** - Most snakes are not aggressive and will not strike unless provoked
2. **Avoid:** Do your best to avoid places that snakes can be hiding, such as:
 - a. Tall grass/piles of leaves
 - b. Wood and rock piles or downed trees
3. **Keep in mind** that snakes are most active at dusk and dawn and in warmer weather.
4. **Wear PPE:** Wear boots and long pants. Wear gloves when handling brush and debris where snakes could be hiding.