



# WORK RIGHT REVIEW

VOLUME 8 | ISSUE 15 | ARCHIVE WORKRIGHTNW.COM



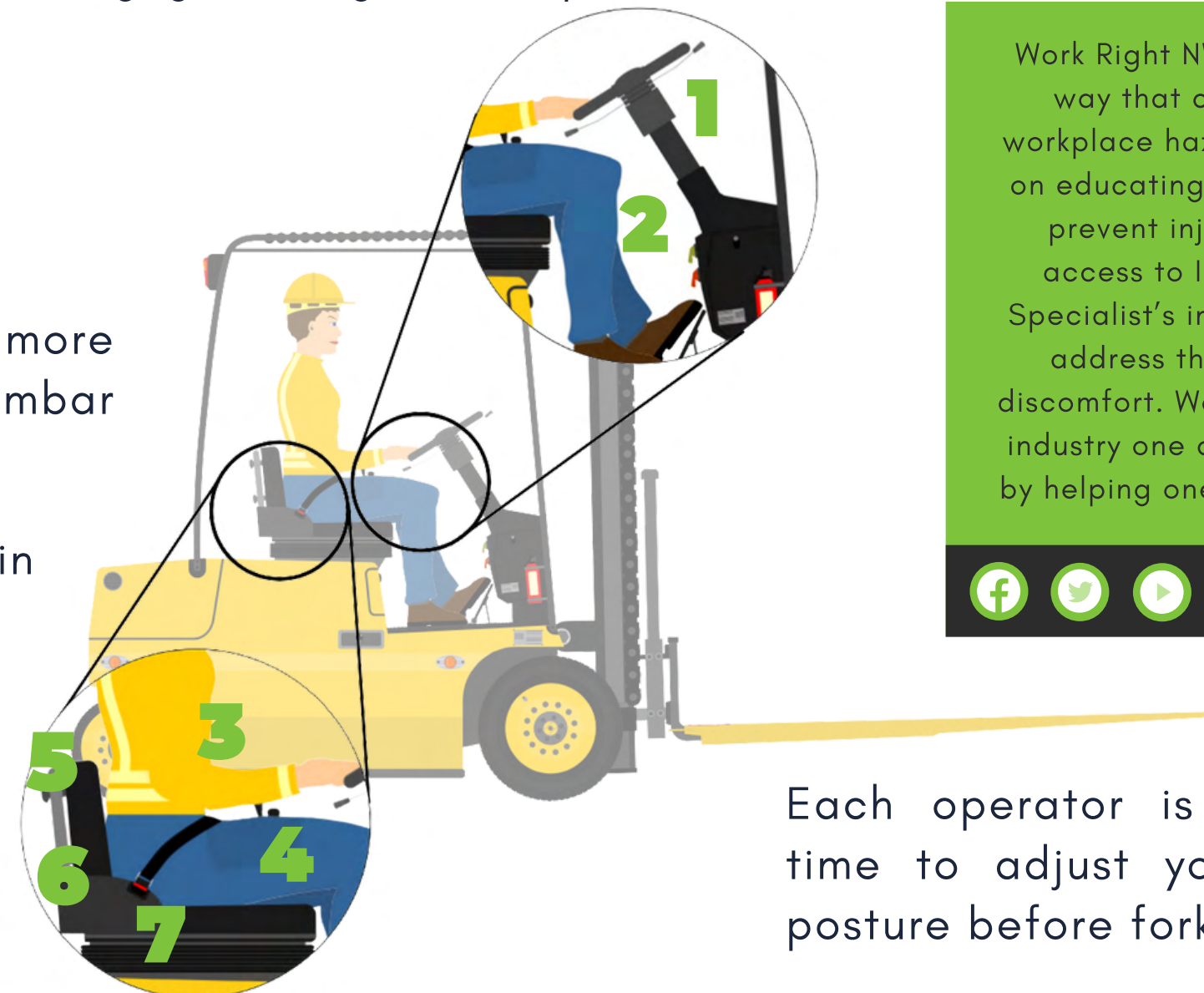
## FORKLIFT ERGONOMICS

BY WRNW

Many of our injury prevention tips in the industrial setting focus on the importance of ergonomics in the workplace, especially at workstations, tables, or desks. But, what about those who work with heavy machinery while sitting down? Check out Work Right's tips on ensuring good ergonomic practice while operating a forklift.

### FORKLIFT ERGO TIPS

- 1** Steering wheel within easy reach when resting against backrest
- 2** Knee angle between 90° and 110°
- 3** Less than 45° angle between elbow and body with hands on the steering wheel
- 4** Thighs horizontal, knee should be at the same height as the pelvis
- 5** Backrest angle no more than 100° with lumbar support at low back
- 6** No wallet or phone in the back pocket!
- 7** Adjust air to reduce vibration



**WANT TO READ MORE?  
SCAN THE QR!**

Work Right NW is changing the way that companies view workplace hazards. Our focus is on educating the workforce to prevent injury. We provide access to Injury Prevention Specialist's in the workplace to address the early signs of discomfort. We are changing the industry one company at a time by helping one person at a time.



Each operator is unique! Take time to adjust your angle and posture before forklift operation.